

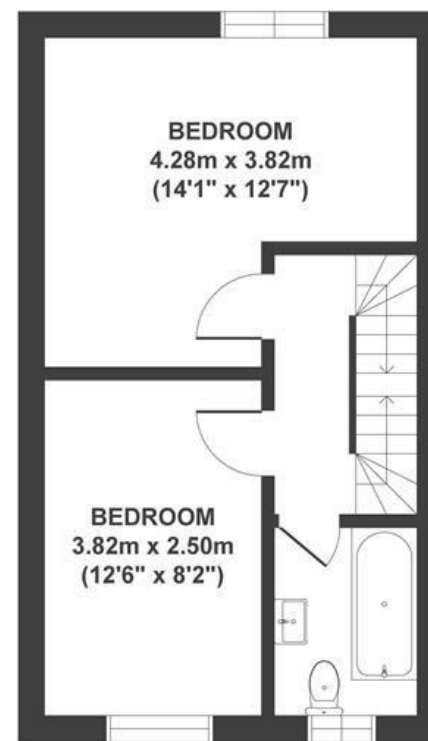
# Park Mews

## BEDMINSTER

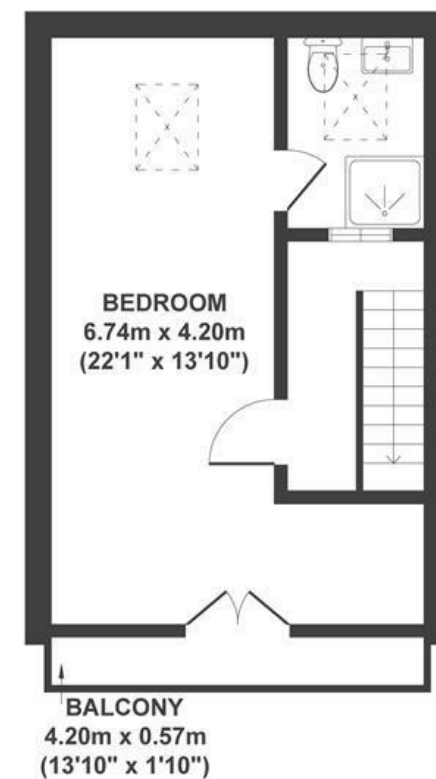
APPROXIMATE FLOOR AREA  
102 SQM / 1099 SQFT



GROUND FLOOR



FIRST FLOOR



SECOND FLOOR

**Boardwalk**

# Park Mews

BEDMINSTER, BRISTOL



£450,000



3 Bedrooms



BS3 4BJ



2 Bathrooms

*"Brilliant location with the park right on your doorstep and lovely views. Great pubs and restaurants nearby and an easy walk to North Street as well as the centre of Bristol"*

